

# NEW PASS SARASOTA COUNTY, FLORIDA PROJECT CONDITION SURVEY FY22 8 AND 10-FOOT PROJECT

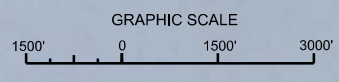
### SURVEY NOTES

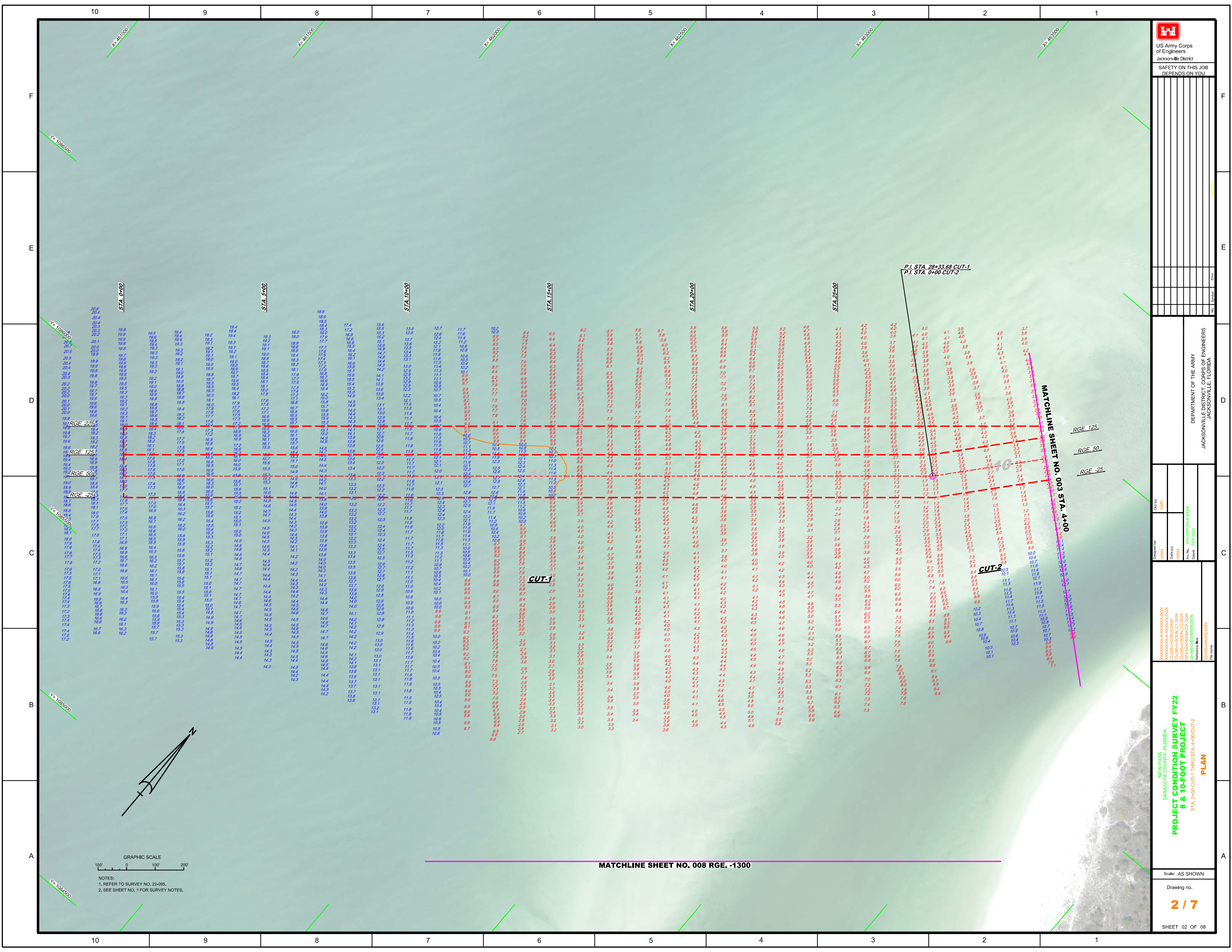
- REFER TO SURVEY NO. 22-095.
  - SOUNDINGS ARE IN FEET AND TENTHS AND REFER TO NOAA'S REPORTED MEAN LOWER LOW WATER (MLLW) OF THE 1983-2001 TIDAL EPOCH.
  - TIDAL REDUCTIONS WERE OBTAINED UTILIZING A REAL-TIME KINEMATIC (RTK) GPS AND REFERENCED TO MLLW UTILIZING A HYPACK KINEMATIC TIDE DATUM (KTD) MODEL. KTD FILE NAME IS: "SPC-FL-WEST-2010-12-07.KTD".
  - ALL ELEVATIONS ARE BELOW THE CHART DATUM UNLESS PRECEDED BY A (+) SIGN.
  - PLANE COORDINATES ARE BASED ON THE TRANSVERSE MERCATOR PROJECTION FOR THE WEST ZONE OF FLORIDA AND REFERENCED TO NORTH AMERICAN DATUM OF 1983 (NAD83).
  - ALL STATIONING REFERS TO THE CENTERLINE OF THE CHANNEL.
  - THIS SURVEY WAS PERFORMED USING REAL-TIME KINEMATIC (RTK) GPS POSITIONING WITH THE FOLLOWING REFERENCE BASE LOCATION:  
REFERENCE BASE LOCATED AT "IWSA-96" (PID: BBDG39)
  - DEPTHS DEPICTED BY THIS SURVEY ARE REFERENCED TO MLLW, TIDAL EPOCH 1983-2001 AS REPORTED BY THE NATIONAL OCEANIC AND ATMOSPHERIC ADMINISTRATION (NOAA). NOAA'S VDATUM MODEL WAS USED AND CALIBRATED TO THE PUBLISHED MLLW HEIGHTS OF THE BENCHMARKS ASSOCIATED WITH THE TIDE GAGE SITES SPECIFIED BELOW:  
NOAA TIDAL STATION 872-6083 USED FOR ALL CUTS. (PID: AG7713)  
VERTICAL MEASUREMENTS WERE MADE USING A ROSS MODEL 835 SMART SOUNDER WITH A DUAL-FREQUENCY 28000 KHZ SINGLE-BEAM TRANSDUCER. ALL SOUNDINGS SHOWN ARE IN HIGH FREQUENCY.
- | VESSEL | DATE OF SURVEY | CUT                   |
|--------|----------------|-----------------------|
| SB-52  | 07 SEP 2022    | CUTS 6 AND 7          |
| SB-52  | 08 SEP 2022    | CUTS 1 THRU 5, & T.B. |
- AIDS TO NAVIGATION WERE LOCATED DURING THIS SURVEY.
  - THE INFORMATION DEPICTED ON THIS MAP REPRESENTS THE RESULTS OF SURVEYS MADE ON THE DATES INDICATED ABOVE AND CAN ONLY BE CONSIDERED AS INDICATING THE GENERAL CONDITIONS AT THAT TIME. THIS CHART IS SOLELY FOR THE DISTRIBUTION OF AVAILABLE DEPTHS AT THE TIME OF THE SURVEY.
  - SURVEY ACCURACY PERFORMANCE STANDARDS, QUALITY CONTROL, AND QUALITY ASSURANCE REQUIREMENTS WERE FOLLOWED DURING THIS SURVEY IN ACCORDANCE WITH USACE EM 1110-2-1003, HYDROGRAPHIC SURVEYING, 30 NOV 2013.

LEGEND	
	GPS MONUMENT
	LIGHTED BEACON
	GREEN DAYBEACON
	RED DAYBEACON
	RED LIGHTED BUOY
	GREEN LIGHTED BUOY
	CAN BUOY
	NUN BUOY
	TIDE STAFF
	PROJECT DEPTH

US Army Corps of Engineers  
Jacksonville District  
SAFETY ON THIS JOB  
DEPENDS ON YOU

<p>DESIGNED BY: <b>WRM</b></p> <p>DRAWN BY: <b>WRM</b></p> <p>CHECKED BY: <b>GHR</b></p> <p>DATE: <b>SEP 2022</b></p>	<p>PROJECT CONDITION SURVEY FY22 8 &amp; 10-FOOT PROJECT INDEX, LOCATION AND VICINITY MAP</p>
<p>Scale: AS SHOWN</p> <p>Drawing no.</p> <p style="font-size: 24pt; font-weight: bold;">1 / 7</p>	<p>SHEET 01 OF 08</p>





Checked by:	GHM
Designed by:	WRM
Drawn by:	WRM
Scale:	AS SHOWN
Date:	SEP 2022

NEW PASS  
SARASOTA COUNTY, FLORIDA  
**PROJECT CONDITION SURVEY FY22  
8 & 10-FOOT PROJECT**  
STA. 0+00 CUT-1 THRU STA. 4+00 CUT-2  
**PLAN**

GRAPHIC SCALE  
100' 0 100' 200'  
NOTES:  
1. REFER TO SURVEY NO. 22-095.  
2. SEE SHEET NO. 1 FOR SURVEY NOTES.

MATCHLINE SHEET NO. 008 RGE. -1300

MATCHLINE SHEET NO. 003 STA. 4+00

P.I. STA. 28+33.68 CUT-1  
P.I. STA. 0+00 CUT-2

CUT-1

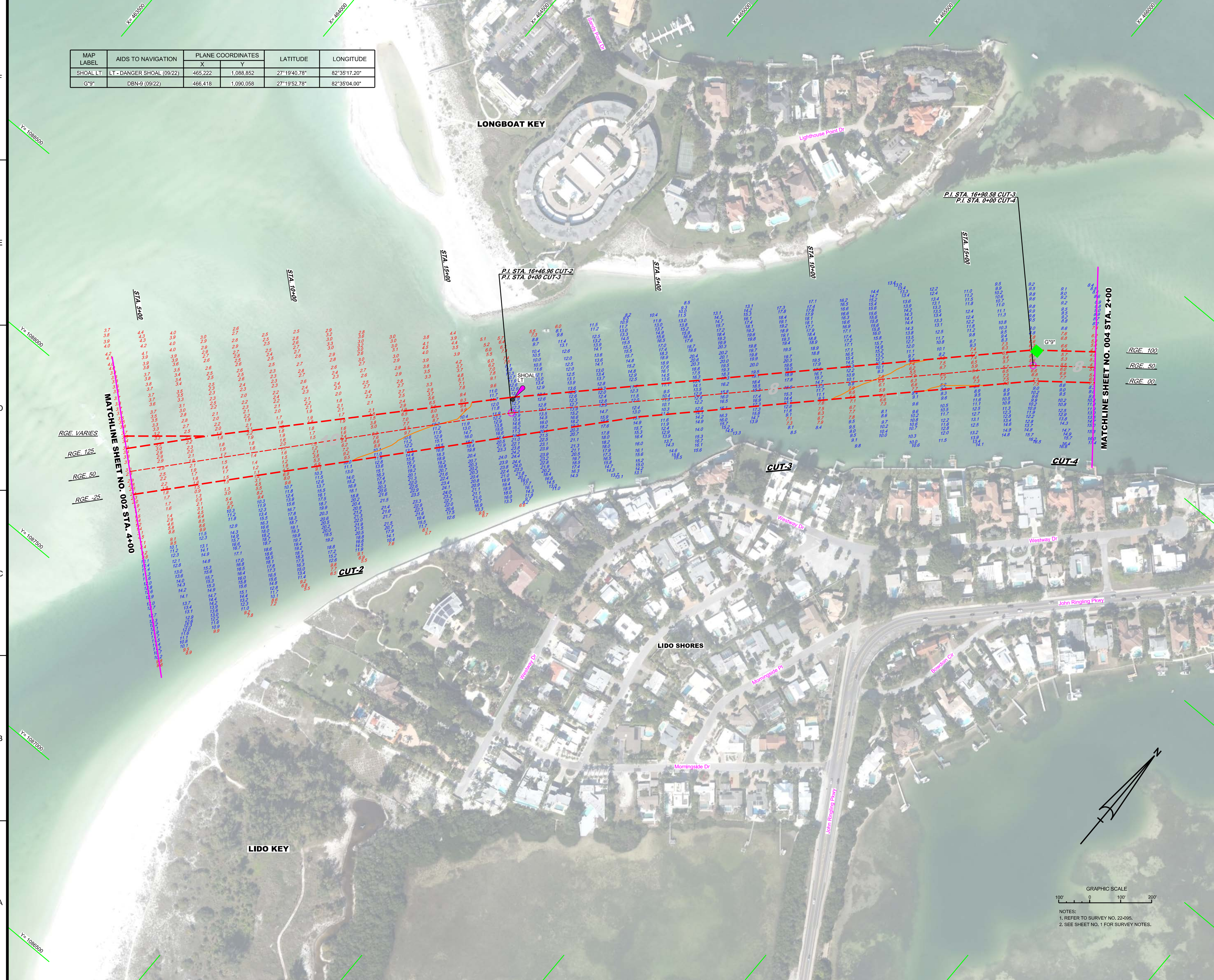
CUT-2

RGE. 125  
RGE. 50  
RGE. -25

10 9 8 7 6 5 4 3 2 1

MAP LABEL	AIDS TO NAVIGATION	PLANE COORDINATES		LATITUDE	LONGITUDE
		X	Y		
SHOAL LT	LT - DANGER SHOAL (09/22)	465.222	1,088.852	27°19'40.78"	82°35'17.20"
G°9"	DBN-9 (09/22)	466.418	1,090.058	27°19'52.78"	82°35'04.00"

US Army Corps of Engineers  
Jacksonville District  
SAFETY ON THIS JOB  
DEPENDS ON YOU



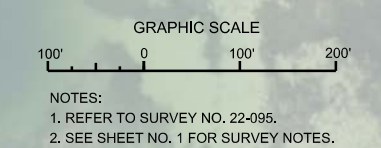
DEPARTMENT OF THE ARMY  
JACKSONVILLE DISTRICT CORPS OF ENGINEERS  
JACKSONVILLE, FLORIDA

Checked by: GHR  
Designed by: WRM  
Drawn by: WRM  
File No: W82255-00-000-000  
Date: SEP 2022

18-0665A-CON/UDON  
18-0665A-SOIL\_C/UDON  
18-0665A-SOIL\_CD/UDON  
18-0665A-SOIL\_CD/UDON  
22-0665A-00-000-000  
Reference Map: 22-0665A-00-000-000

NEW PASS  
SARASOTA COUNTY, FLORIDA  
**PROJECT CONDITION SURVEY FY22  
8 & 10-FOOT PROJECT**  
STA. 4+00 CUT-2 THRU STA. 2+00 CUT-4  
**PLAN**

Scale: AS SHOWN  
Drawing no.  
**3 / 7**  
SHEET 03 OF 08

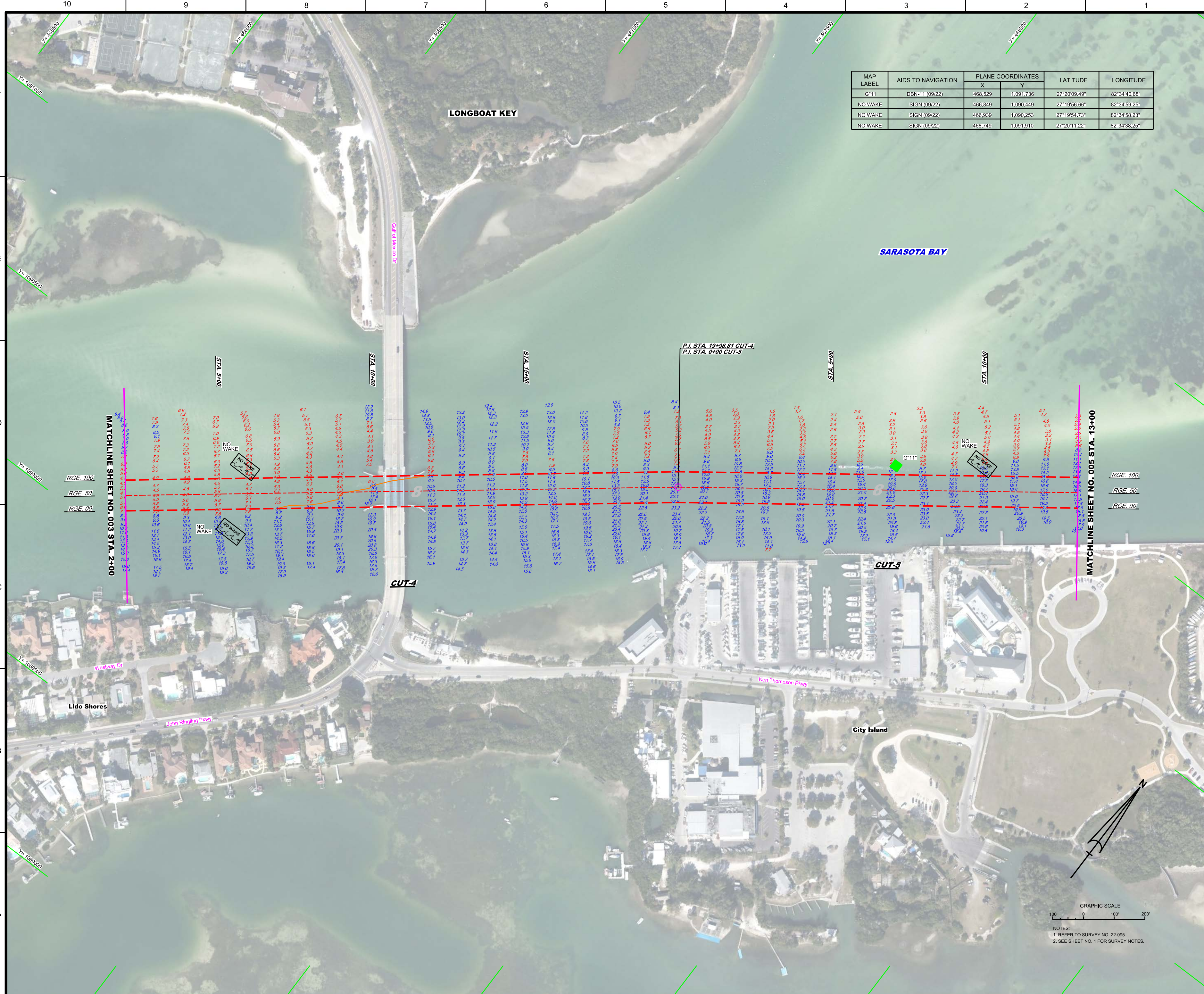




US Army Corps of Engineers  
Jacksonville District

SAFETY ON THIS JOB  
DEPENDS ON YOU

MAP LABEL	AIDS TO NAVIGATION	PLANE COORDINATES		LATITUDE	LONGITUDE
		X	Y		
G-11	DBN-11 (09/22)	468,529	1,091,736	27°20'09.49"	82°34'40.68"
NO WAKE	SIGN (09/22)	466,849	1,090,449	27°19'56.66"	82°34'58.25"
NO WAKE	SIGN (09/22)	466,939	1,090,253	27°19'54.73"	82°34'58.23"
NO WAKE	SIGN (09/22)	468,749	1,091,910	27°20'11.22"	82°34'38.25"

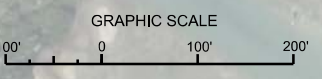


MATCHLINE SHEET NO. 003 STA. 2+00

MATCHLINE SHEET NO. 005 STA. 13+00

RGE. 100  
RGE. 50  
RGE. 00

RGE. 100  
RGE. 50  
RGE. 00



NOTES:  
 1. REFER TO SURVEY NO. 22-095.  
 2. SEE SHEET NO. 1 FOR SURVEY NOTES.

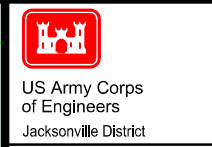
DEPARTMENT OF THE ARMY  
 JACKSONVILLE DISTRICT, CORPS OF ENGINEERS  
 JACKSONVILLE, FLORIDA

Designed by: GHR  
 Drawn by: GHR  
 Checked by: GHR  
 Date: SEP 2022

XXXXXXXXXXXXXXXXXXXX  
 22-095-A-CON(03).DGN  
 22-095-A-COL(03).DGN  
 22-095-A-ENG(03).DGN  
 22-095-A-PLAN(03).DGN  
 22-095-A-PRO(03).DGN  
 22-095-A-RPT(03).DGN  
 22-095-A-SPR(03).DGN  
 22-095-A-TBL(03).DGN  
 22-095-A-UTL(03).DGN  
 22-095-A-APP(03).DGN  
 22-095-A-COV(03).DGN  
 22-095-A-REF(03).DGN  
 22-095-A-CON(03).DGN

NEW PASS  
 SARASOTA COUNTY, FLORIDA  
**PROJECT CONDITION SURVEY FY22  
 8 & 10-FOOT PROJECT**  
 STA. 2+00 CUT-4 THRU STA. 13+00 CUT-5  
**PLAN**

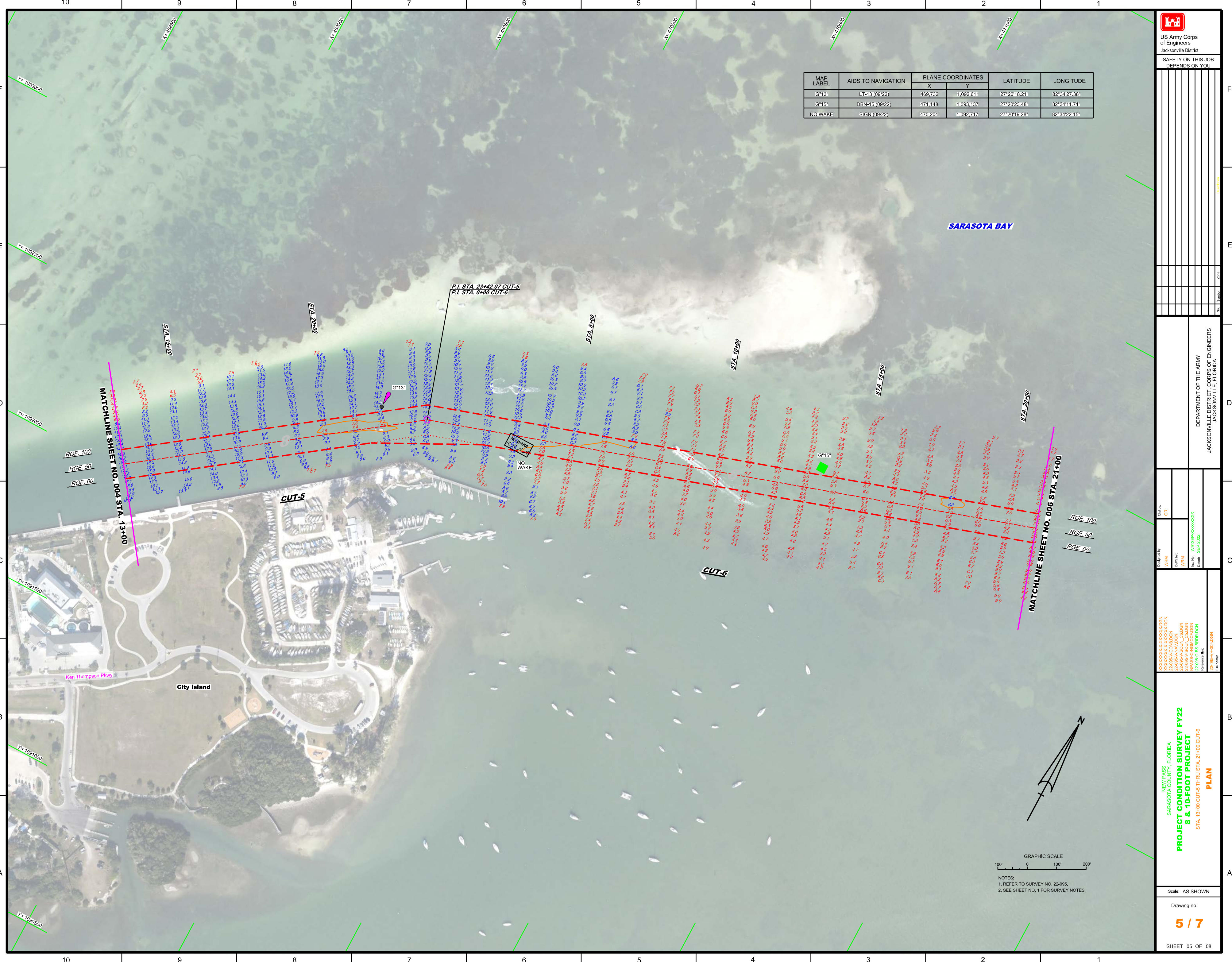
Scale: AS SHOWN  
 Drawing no.  
**4 / 7**  
 SHEET 04 OF 08



US Army Corps  
of Engineers  
Jacksonville District

SAFETY ON THIS JOB  
DEPENDS ON YOU

MAP LABEL	AIDS TO NAVIGATION	PLANE COORDINATES		LATITUDE	LONGITUDE
		X	Y		
G*13*	LT-13 (09/22)	469,732	1,092,611	27°20'18.21"	82°34'27.38"
G*15*	DBN-15 (09/22)	474,148	1,093,137	27°20'23.45"	82°34'11.71"
NO WAKE	SIGN (09/22)	470,204	1,092,717	27°20'19.28"	82°34'22.15"

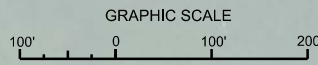


DEPARTMENT OF THE ARMY  
JACKSONVILLE DISTRICT, CORPS OF ENGINEERS  
JACKSONVILLE, FLORIDA

Designed by: WRM  
Checked by: GRL  
Drawn by: WRM  
File No: W81255-00-A-004  
Date: SEP 2022

NEW PASS  
SARASOTA COUNTY, FLORIDA  
**PROJECT CONDITION SURVEY FY22  
8 & 10-FOOT PROJECT**  
STA. 13+00 CUT-5 THRU STA. 21+00 CUT-6  
**PLAN**

Scale: AS SHOWN  
Drawing no.  
**5 / 7**  
SHEET 05 OF 08

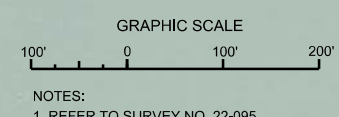
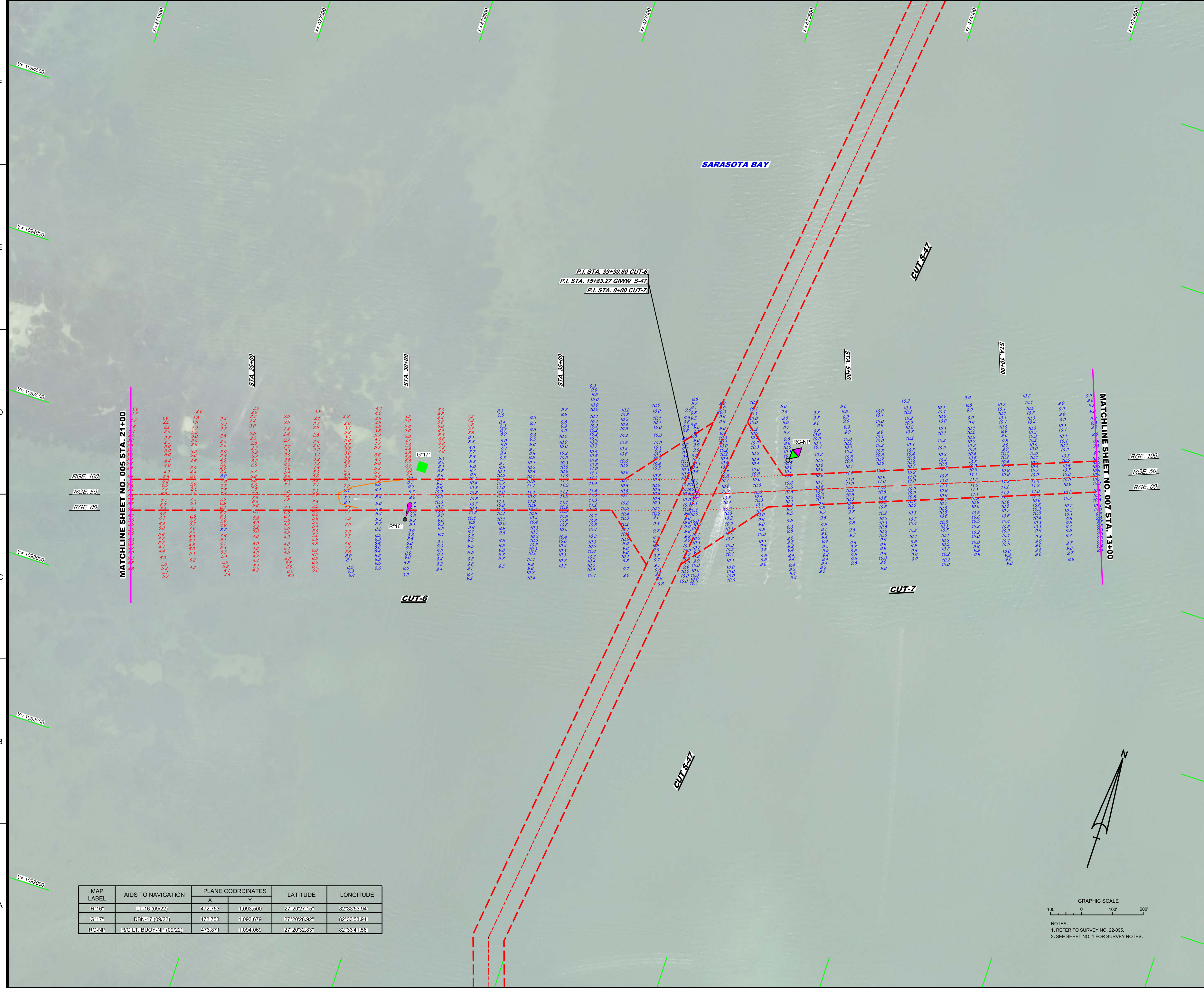


NOTES:  
1. REFER TO SURVEY NO. 22-095.  
2. SEE SHEET NO. 1 FOR SURVEY NOTES.

**US Army Corps of Engineers**  
Jacksonville District

SAFETY ON THIS JOB  
DEPENDS ON YOU

DEPARTMENT OF THE ARMY  
JACKSONVILLE DISTRICT, CORPS OF ENGINEERS  
JACKSONVILLE, FLORIDA



NOTES:  
1. REFER TO SURVEY NO. 22-095.  
2. SEE SHEET NO. 1 FOR SURVEY NOTES.

MAP LABEL	AIDS TO NAVIGATION	PLANE COORDINATES		LATITUDE	LONGITUDE
		X	Y		
R*16	LT#16 (09/22)	472,753	1,093,500	27°20'27.15"	82°33'53.94"
G*17	DBN#17 (09/22)	472,753	1,093,879	27°20'28.92"	82°33'53.94"
RG-NP	R/G LT, BUOY-NP (09/22)	473,871	1,094,069	27°20'32.83"	82°33'41.56"

Call by: GHR

Designed by: WRM

Drawn by: WRM

Checked by: WRM

Scale: 1" = 100'

Date: SEP 2022

Project: PROJECT CONDITION SURVEY FY22 & 10-FOOT PROJECT

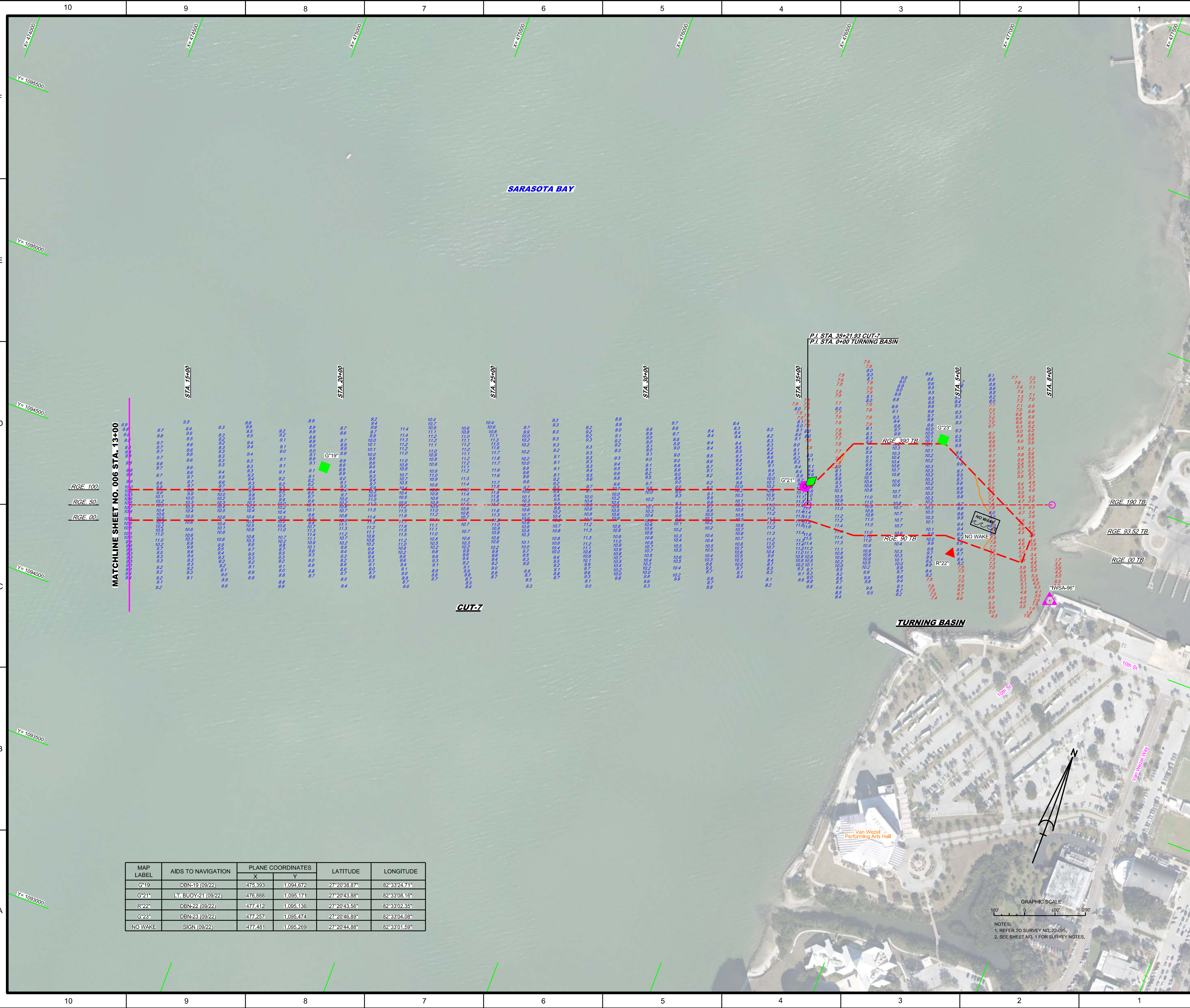
Station: STA. 21+00 CUT-6 THRU STA. 13+00 CUT-7

PLAN

Scale: AS SHOWN

Drawing no. 6 / 7

SHEET 06 OF 08



MAP LABEL	AIDS TO NAVIGATION	PLANE COORDINATES		LATITUDE	LONGITUDE
		X	Y		
G*19	DBN-19 (09/22)	475,393	1,094,672	27°20'38.87"	82°33'24.71"
G*21*	LT. BUOY-21 (09/22)	476,888	1,095,171	27°20'43.88"	82°33'08.16"
R*22*	DBN-22 (09/22)	477,412	1,095,136	27°20'43.56"	82°33'02.35"
G*23*	DBN-23 (09/22)	477,257	1,095,474	27°20'46.89"	82°33'04.08"
NO WAKE	SIGN (09/22)	477,481	1,095,269	27°20'44.88"	82°33'01.59"

GRAPHIC SCALE  
100' 0 100' 200'  
NOTES:  
1. REFER TO SURVEY NO. 22-095.  
2. SEE SHEET NO. 1 FOR SURVEY NOTES.